



38 St. Peters Drive, Askern , Doncaster, DN6 0BF

Beautifully presented throughout, this stunning two-bedroom semi-detached property offers a warm and homely feel and is perfect for first-time buyers looking for a true turn-key home. Offered to the market with no onward chain, the property is ready to move straight into.

The ground floor briefly comprises a spacious lounge, a stylish fitted kitchen with dining area, and a convenient downstairs W/C. To the first floor are two well-proportioned bedrooms and a modern family bathroom.

Externally, the property benefits from off-road parking to the front and a beautifully maintained rear garden, ideal for relaxing or entertaining.

Ideally located close to local amenities, schools, and transport links, this fantastic home combines comfort, style, and practicality.

Early viewing is highly recommended.

EPC Rating: B
Council Tax Band: A

Offers in the region of £160,000

38 St. Peters Drive, Askern , Doncaster, DN6 0BF



- Beautifully presented two-bedroom semi-detached property
- Offered with no onward chain
- Beautifully maintained rear garden
- Gas central heating & Double glazed
- Warm and homely feel throughout
- Stylish fitted kitchen with dining space
- Off-road parking and close to local amenities
- Ideal purchase for first-time buyers
- Convenient downstairs W/C
- Council tax band: A & EPC rating: B

Entrance

3'2" x 5'2" (0.97 x 1.58)

Landing

5'8" x 6'0" (1.75 x 1.83)

W/C

2'8" x 5'0" (0.83 x 1.53)

Lounge

11'11" x 13'4" (3.65 x 4.07)

Kitchen

11'9" x 7'3" (3.60 x 2.22)

Master Bedroom

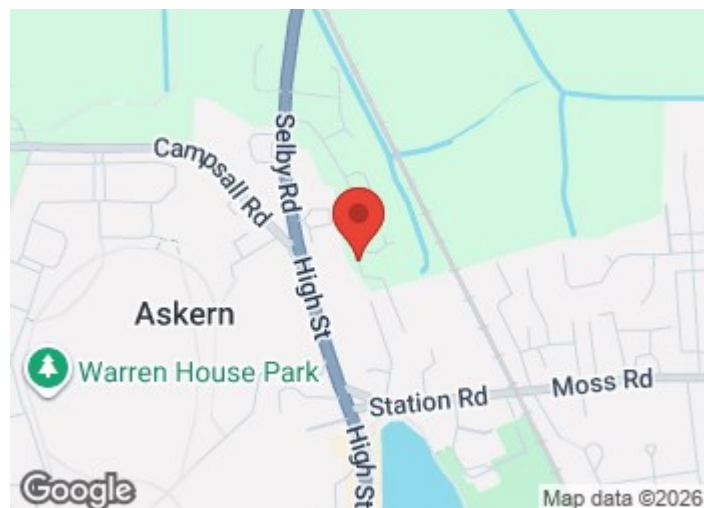
12'2" x 10'4" (3.73 x 3.16)

Bedroom 2

12'1" x 7'4" (3.70 x 2.24)

Bathroom

5'10" x 6'2" (1.80 x 1.89)



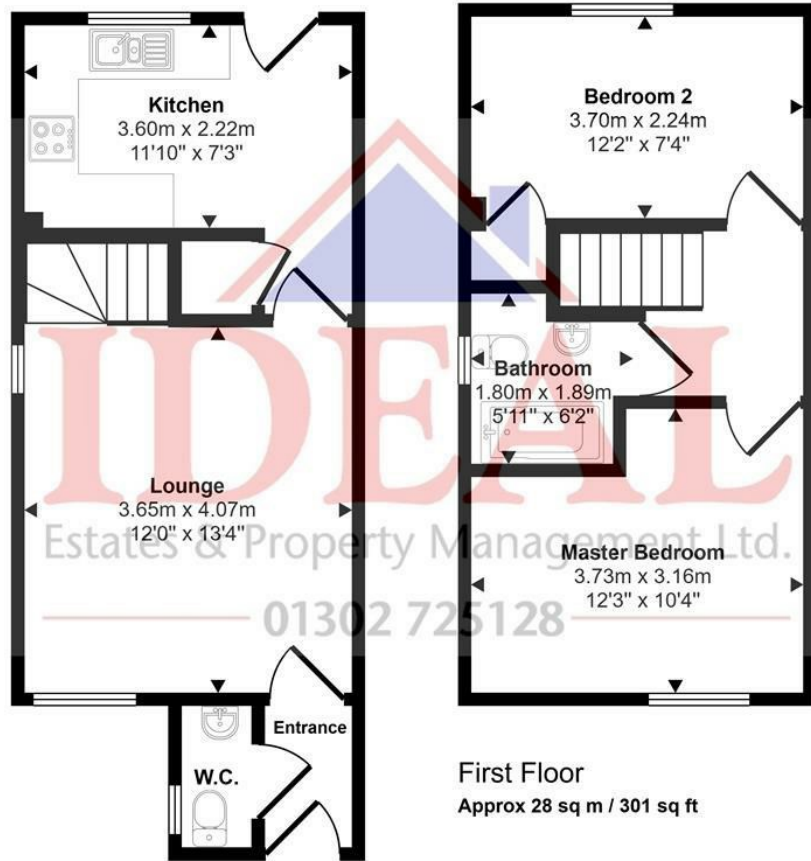
Directions

The village lies 9 miles (14 km) south of Pontefract, and 7 miles (11 km) north of Doncaster. The village offers an array of local amenities, schools, doctors and supermarket. The focal point is Askern lake, offering a lovely walk and cafe stop.



Floor Plan

Approx Gross Internal Area
58 sq m / 629 sq ft



This floorplan is only for illustrative purposes and is not to scale. Measurements of rooms, doors, windows, and any items are approximate and no responsibility is taken for any error, omission or mis-statement. Icons of items such as bathroom suites are representations only and may not look like the real items. Made with Made Snappy 360.

These particulars, whilst believed to be accurate are set out as a general outline only for guidance and do not constitute any part of an offer or contract. Intending purchasers should not rely on them as statements of representation of fact, but must satisfy themselves by inspection or otherwise as to their accuracy. No person in this firm's employment has the authority to make or give any representation or warranty in respect of the property.

